

Description of the Remote Link Option

The Remote Link Option enables the remote control of one or several recorders via a telephone network. It consists of two parts:

1. A special version of the recorder software enables the control of different modem types via the serial interface of the recorder.
2. The expanded terminal software enables to manage several recorders; it controls a modem.

Types of modems

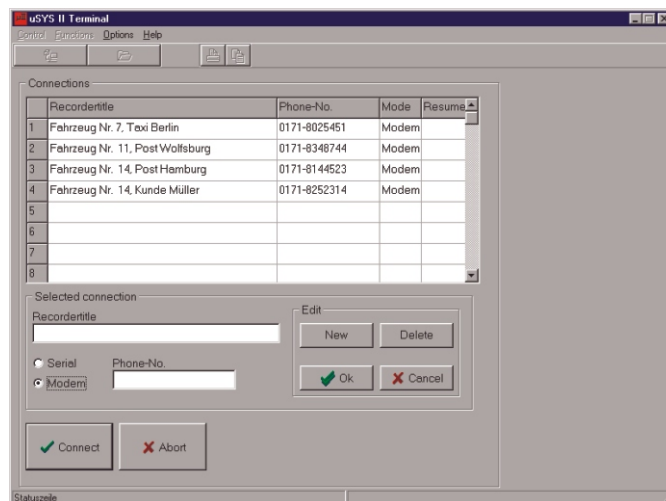
For non mobile installations of the recorder an analogue modem for the normal telephone network (38,4kBAud) is used. (ISDN modems can be supported on request).

When the recorder is used in a mobile application or a connection to the normal telephone network is not possible, a mobile modem can be used. This mobile modem uses a direct connection to the mobile GSM networks of all available providers (e. g. T-Mobile, Vodafone etc.). Like a mobile telephone the recorder can then be reached practically anywhere in Germany or across Europe.

In addition, other modems with a RS-232 interface and Hayes-compatible AT command set can be adjusted.

Expanded terminal software

The terminal software supports all Hayes-compatible modems and has a data bank. This data bank takes care of several recorders. It stores for every recorder (clear text title) a telephone number. By simply selecting the recorder



a connection to that recorder is automatically established via the modem. All functions are then available to the operator and can normally be operated from the terminal. Additionally a possibility is built in that the transfer can be continued after an error. This is possible independently for every recorder of the data bank. The data bank also informs the operator of the status of the transfer.

Typical applications

- Long time measurements with mobile measuring objects: Ground vehicles, ships etc.
- Measurement at remote spots: Islands, mountains, excavators etc.
- Parallel measurements with several measuring objects distributed to a wide geographical range: Wind parks, power plants etc.